



Struconcept

Consultores de Engenharia

CURRICULUM VITAE

INDEX

PRESENTATION.....	2
CONTACTS.....	3
RESOURCES.....	3
FIELDS OF ACTIVITY.....	4
PROJECTS.....	4
CONSULTING SERVICES.....	4
EXPERTISE AND CONSULTANCY.....	4
HIRING ASSISTANCE.....	4
CURRICULUM.....	4
CURRICULUM OF STRUCONCEPT.....	5
PARTNER'S PROFESSIONAL CURRICULUM.....	24
SPECIAL REFERENCES.....	24
BRIDGES, VIADUCTS AND TUNNELS.....	25
PUBLIC BUILDINGS.....	32
INDUSTRIAL AND COMMERCIAL BUILDINGS.....	36
FUEL SERVICE STATIONS.....	39
EDIFÍCIOS E INSTALAÇÕES COMERCIAIS.....	40
BUILDINGS AND CULTURAL INSTALLATIONS.....	41
RELIGIOUS BUILDINGS.....	42
HOTELS INSTALLATION BUILDINGS AND SIMILAR.....	43
SPORTS BUILDINGS.....	44
WATER TREATMENT PLANTS AND EFFLUENT.....	45
TANKS AND SILOS.....	48
GEOTECHNICAL WORKS.....	48
PROJECT COORDINATION.....	49
BUILDING PROJECTS.....	50
PROJECTS ABROAD.....	53
PROJECT REVIEW / ADVISORY SUPERVISION.....	54
ADVISORY SUPERVISION.....	55

PRESENTATION

STRUCONCEPT, Lda., founded in April 2009, is an engineering consultancy, providing a large range of technical services covering every type of building development for the public and private sector.

We specifically provide services dedicated to structural engineering, building engineering, bridge design, multidisciplinary coordination of projects and technical consultancy.

STRUCONCEPT is owned and managed by the 3 founders of the company who work together for more than 20 years:

- Alberto Manuel Guimarães Brochado Teixeira
 - *Civil engineer in construction– Option Structures – 1988, Faculty of Engineering of the University of Porto*
 - *Senior Member of the Order of the Engineers of Portuga*
- Eugénio Paulo da Cruz Maia
 - *Civil engineer in construction– Option Structures – 1987, Faculty of Engineering of the University of Porto*
 - *Master of Sciences in Structures at the Faculty of Engineering of the University of Porto*
 - *Senior Member of the Order of the Engineers of Portugal*
- Miguel Pedro Garcia Machado Guimarães
 - *Civil engineer in construction– Option Structures – 1988, University of Porto – Faculty of civil engineering at the University of Porto*
 - *Master of Sciences in Structures at the Faculty of Engineering of the University of Porto*
 - *Senior Member of the Order of the Engineers of Portugal*

The experience of the associates is based on the successful development of projects and the multi disciplinary coordination of skills, for more than 20 years as project leaders in a well-known Portuguese engineering company, developing projects for road bridges, rail bridges, industrial structures, sport facilities, public and private buildings and services

Our breadth of skills and services, thanks to our staff and close partnership with companies which are complementary to our activities, makes STRUCONCEPT one of the top players in delivering engineering and consultancy solutions for our customers.

Professional organisations to which the company or associates are active members:

- *Order of engineers*
- *GPBE – Portuguese group for structural concrete*
- *IABSE – International Association for Bridge and Structural Engineering*

CONTACTS

STRUCONCEPT, LDA – consultant engineers
HQ: Rua de São João Bosco, 347 - 5º A -
4100-531 Porto
Office: Rua Jornal de Notícias, 205 - 4100-296
Porto
Phone: +351 220 939 525/6
Fax: +351 220 939 524
E-mail: geral@struconcept.pt
Site: www.struconcept.pt

Delegation in Angola:
Rua Salvador Allende, nº 77 R/C
Luanda - ANGOLA
Tel: 00 244 924052634
00 244 925051530

RESOURCES

STRUCONCEPT is equipped with computer resources dedicated to its activities, and regularly updated:

- Hardware
- Mobile hardware
- Information is centralised and classified in the main central servers, with backup and with double power input
- Software for structure calculation and design (finite element structural analysis, dynamic analysis, non-linear analysis, mechanic analysis, geometric analysis, ..)
- In-house software developed by STRUCONCEPT for the structural analysis (foundation, organic calculation, calculation and application of prestress, bridge phase analysis, light steel structure)
- CAD software (with in-house customizing and/or development):
 - Civil 3D (land modelling, roads and highways projects, water, wastewater and stormwater infrastructures, stormwater retention basins, ...)
 - REVIT Structure, Architecture e MEP
 - Autodesk Structural Detailing e Autodesk 3ds Max Design
- Software for hydraulic projects (procurement, waste water and rain water) and public networks
- Printers for standard and large formats
- Miscellaneous equipments of measurement and control
- Extensive library (with more than 3.000 publications)

FIELDS OF ACTIVITY

PROJECTS

Special buildings and structures

Bridges, viaducts and tunnels;

Environmental infrastructure, water, wastewater and mining

Industrial and commercial buildings schools, sports buildings, swimming pools institutional, cultural, religious and hotelier buildings houses and housing buildings

Geotechnical Works

Landscaping and public spaces rehabilitation of structures/buildings Special studies and advice coordination and project revision

CONSULTING SERVICES

Technical reports

Revision and certification of projects

Owner and Promoter advising

Support of other offices

EXPERTISE AND CONSULTANCY

Quality Management and Control

Monitoring the progress on site

Validation of material, human and technical execution of contracts for schedule fulfilment and quantities validation

Hygiene and safety on site

Registration and quality certification promotion for materials and execution

HIRING ASSISTANCE

Bidding organization and launching and tenders selection assistance

Tenders selection and contract assistance

CURRICULUM

Then, presents a summary of 3 managing partners (until 2009) and Struconcept (after 2009).

CURRICULUM OF STRUCONCEPT



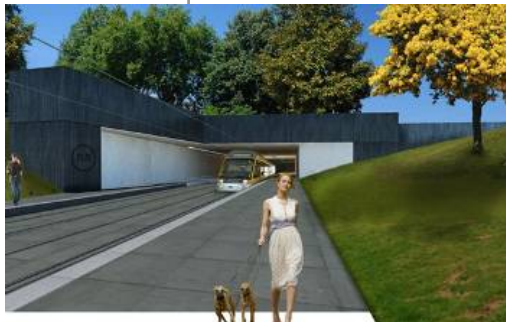
▪ Panoramic Ropeway at the riverside zone in Gaia

Entity: TELEF /C. M. Vila Nova de Gaia

Specialties: Foundations and Structures, Hydraulic Infrastructures, SSH
Project: 2009

Built: 2009 / ongoing

Global Value / Our Works Value: 950.000 € / 442.000€



▪ Urban light railway in Porto - Extension from ISMAI to Trofa

Entity: IDOM / METRO DO PORTO

Specialties: Foundations and Structures, Hydraulic Infrastructures
Project: 2009 / ongoing

Built: 2009 / ongoing

Global Value / Our Works Value: - / 12.500.000 €



▪ Maia Business Park - Central Warehouse

Entity: IGI, Investimento Imobiliário, S.A./MODIS, Distribuição, S.A.

Specialties: Foundations and Structures; Flooring
Project: 2009

Built: 2009

Global Value / Our Works Value: 20.000.000 € / 12.500.000€



▪ Quinta das Flores High School and Music Conservatory at Coimbra

Entity: PARQUE ESCOLAR

Specialties: Foundations and Structures, Solid Waste, SSH
Project: 2009

Built: 2009 / ongoing

Global Value / Our Works Value: 20.000.000 € / 4.000.000€



▪ New Courts Gouveia

Entity: Instituto de Gestão Financeira do Ministerio da Justiça

Specialties: Structures, Hydraulic Infrastructures, SSH

Project: 2009

Built: ongoing

Global Value / Our Works Value: 3.000.000 € / 1.000.000 €



▪ Anaerobic Digestion Plant at Abrunheira – Mafra

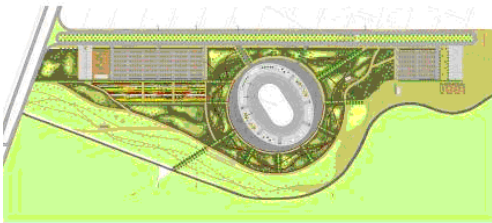
Entity: MOTA-ENGIL - ZAGOPE / TRATOLIXO

Specialties: Foundations and Structures, Hydraulic Infrastructures

Project: 2009 / ongoing

Built: ongoing

Global Value/Our Works Value: 47.000.000€ / 12.000.000€



▪ Infrastructure and exterior arrangements to the new Stadium in Benguela - Angola

Entity: BENFIM, S.A. / MINIST. OBRAS PÚBLICAS DE ANGOLA

Specialties: Architecture, Structures, Hydraulic, Electricity, Access roads

Project: 2009 / ongoing

Built: 2009 / ongoing

Global Value/Works Value: 20.000.000€/20.000.000€

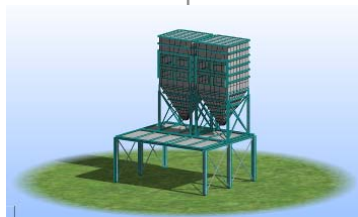


▪ Structural Inspection to the Rosa Mota Sports Pavilion in Porto

Entity: GOLDER / Câmara Municipal do Porto

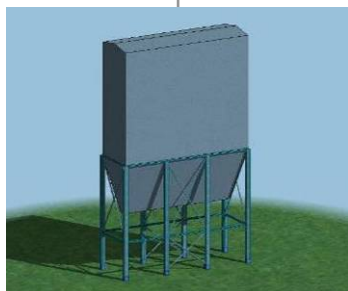
Specialties: Structures

Project: 2009



▪ Structural strength for new filters in Sines Thermal Power Plant

Entity: EFACEC / EDP
Specialties: Foundations and Structures
Project: 2009
Built: 2009



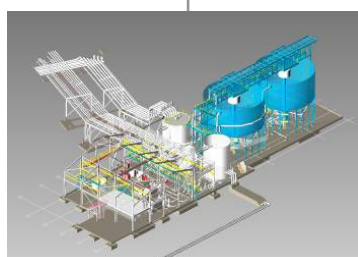
▪ Steel Structures for Silos and Filters at Portugal, Morocco and Belgium

Entity: EFACEC
Specialties: Structures
Project: 2009
Built: 2009



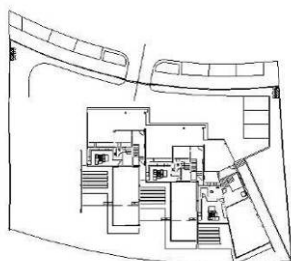
▪ PM4-ATF: Portucel Paper Mill plant , Setúbal

Entity: FASE- Estudos e Projectos, S.A. / PORTUCEL
Specialties: Foundations and Structures
Project: 2009
Built: 2009
Global Value / Works Value: 100.000.000 € / 20.000.000€



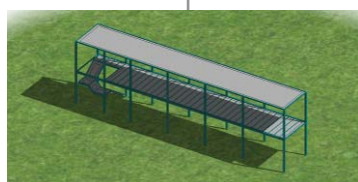
▪ Rejected Plant at the Neves Corvo Mines in Castro Verde

Entity: GOLDER / SOMINCOR
Specialties: Structures, Hydraulic
Project: 2009
Built: ongoing
Global Value / Our Works Value:



▪ 3 Houses at Fajozes - Mindelo

Entity: SOFIA CORTE-REAL CARVALHO NETO
Specialties: Structures
Project: 2009
Built: 2009 / ongoing
Global Value / Our Works Value: 600.000 € / 150.000€



▪ Mezzanine on the Worten store in Continente Shopping Center, Braga

Entity: WORTEN
Specialties: Structures
Project: 2009
Built: 2009
Global Value / Our Works Value: 10.000€ / 10.000€



▪ Catwalk to a Publicity Panel - Funchal

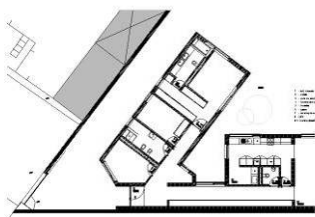
Entity: CLEARSPOT, Publicidade e Marketing Integrado, Lda.

Specialties: Structures

Project: 2009

Built: 2009

Global Value / Our Works Value: 30.000€ / 10.000€



▪ House at Rua Heitor Campos Monteiro - Porto

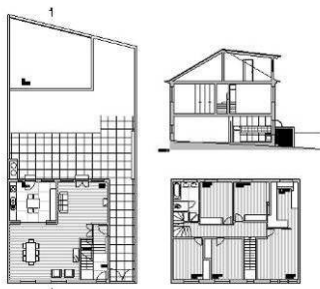
Entity: Daniela Maria Veloso Palhares

Specialties: Foundations and Structures, Hydraulic Infrastructures

Project: 2009

Built: 2009

Global Value / Our Works Value: - / -



▪ House renewal at Rua Coronel Almeida Valente - Porto

Entity: Paulo Jorge Varela Cerqueira Fernandes

Specialties: Structures, Hydraulic Infrastructures

Project: 2009

Built: 2009

Global Value / Our Works Value: - / -



▪ Protection Works at Abandoned Mines - Northern and Central Portugal

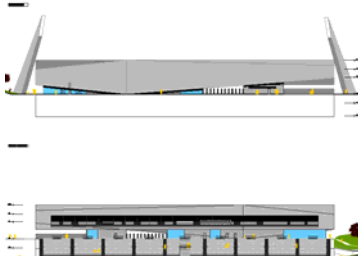
Entity: EDM - Empresa de Desenvolvimento Mineiro, SA

Specialties: General Projects and Site Surveying

Project: 2009

Built: 2009

Global Value / Our Works Value: 750.000 € / 750.000€



▪ Steel Roof Structures - New Stadium at Paredes

Entity: PÓRTICO, Lda. / Câmara Municipal de Paredes

Specialties: Steel Structures

Project: 2009

Built: 2009

Global Value / Our Works Value: - € / -€



▪ Modelo Store at Vivaci Mall - Maia

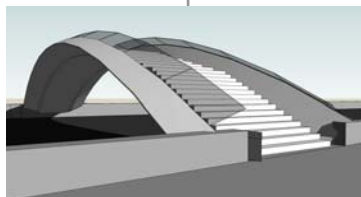
Entity: I.G.I. - Investimento Imobiliário, S.A. (SONAE)

Specialties: Infrastructures Hydraulics

Project: 2009

Built: 2009

Global Value / Our Works Value: - / 70.000€



▪ Footbridge over the Canal das Pirâmides (Rossio / Alboi) in Aveiro (Ideas Competition)

Entity: Arqº Pedro Pimentel / C. M. Aveiro

Specialties: Structures, Hydraulics, Electricity, SSH

Project: 2009

Built: -

Global Value / Our Works Value: 350.000 € / 250.000€



▪ New High School - Anadia

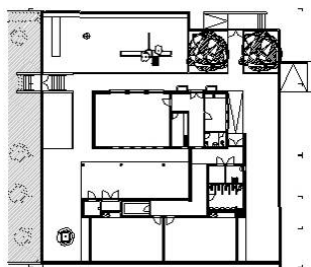
Entity: Parque Escolar, E.P.E.

Specialties: Geotechnical survey, Structures, Hydraulic, Solid Waste, SSH

Project: 2009 / ongoing

Built: □

Global Value / Our Works Value: 16.000.000€ / 5.500 000€



▪ Kindergarten in Lavos, Figueira da Foz

Entity: CONDURIL - Engenharia, S.A. / Câmara Municipal da Figueira da Foz

Specialties: Global Project

Project: 2009 / 2010

Built: -

Global Value / Our Works Value: 300.000€ / 300.000€



▪ Train repair Workshop plant of CP Urban at Guifões

Entity: Idom / Metro do Porto

Specialties: Foundations and Structures; Hydraulic

Project: 2009

Built: 2009

Global Value / Our Works Value: 2.000.000 € / 1.000.000€



▪ Oliveira do Bairro Cultural Center

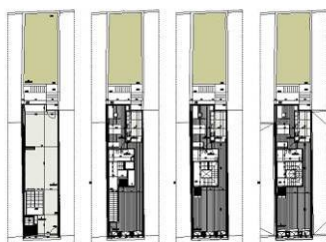
Entity: Arqº Miguel Guedes / Câmara Municipal de Oliveira do Bairro

Specialties: Structures, Hydraulic Infrastructures

Project: 2009 / ongoing

Built:

Global Value / Our Works Value: 6.000.000 € / 1.500.000€



▪ Residential and commercial building at Rua Miguel Bombarda - Porto

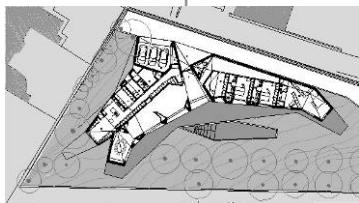
Entity: ARQª Paula Santos / Tabolarasa

Specialties: Hydraulic

Project: 2009 / ongoing

Built:

Global Value / Our Works Value: -.€ / - €



▪ CISO II House at Porto

Entity: NARCISO OLIVEIRA

Specialties: Foundations and Structures; Hydraulic

Project: 2009 / ongoing

Built:

Global Value / Our Works Value: 450 000 € / 130 000 €



▪ Technical Assistance to the Structural Works for Bleach Plant - Guifões

Entity: PROCTER & GAMBLE

Specialties: Consulting

Project: 2009 / ongoing



▪ New Social Building for Tratulixo

Entity: TRATOLIXO / ARQUIPROJECTA

Specialties: Structures, Access roads and Hydraulic

Project: 2009 / ongoing

Built: 2010/ongoing

Global Value / Our Works Value: -€ / - €



▪ Municipal in-door Swimming Pools Complex in Chaves

Entity: POLISCHAVES / BARBOSA & GUIMARÃES

Specialties: Structures

Project: 2009 / ongoing

Built: □

Global Value / Our Works Value: 4.000.000 € / -



▪ Infanta D. Maria High School at Coimbra

Entity: PARQUE ESCOLAR E.P.E.

Specialties: Foundations, Steel Structures

Project: 2009 / 2010

Built: ongoing

Global Value / Our Works Value: 23.000.000 € / 5.000.000€



▪ Student Residence in Sé, Porto

Entity: Engº Diogo Alpendurada / SRU

Specialties: Foundations, Structures

Project: 2009 / ongoing

Built: -

Global Value / Our Works Value: 6.500.000 € / -



▪ Refurbishment and extension of cottage in V. N. Cerveira

Entity: Rui Miguel Oliveira Gonçalves
Specialties: Global Project
Project: 2010
Built: ☐
Global Value / Our Works Value: - € / - €



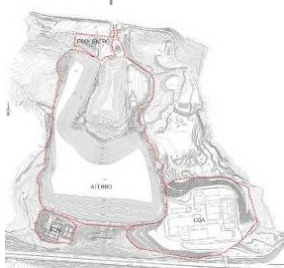
▪ Refurbishment and extension of a building at Rua António Patrício 137, Porto

Entity: SCODIBLUE - Gestão Lda.
Specialties: Global Project
Project: 2010
Built: -
Global Value / Our Works Value: - € / - €



▪ Restaurant Vindouro - Lamego

Entity: DEWPOINT - Refrigeração e Equipamentos Hoteleiros
Specialties: Foundations and Structures
Project: 2010
Built: 2010
Global Value / Our Works Value: - € / - €



▪ Ecopark at Abrunheira: Hydraulics Equipment Integration in to Sanitary Landfill, ETAL, Ecocentro and CDA

Entity: TRATOLIXO
Specialties: Foundations and Structures, Hydraulic
Project: 2010
Built: 2010
Global Value / Our Works Value: - € / - €



▪ Refurbishment of Housing and Adaptation Cellar, Stª Marinha do Zêzere

Entity: Eng.º Eduardo Alves de Sá
Specialties: Global Project
Project: 2010
Built:
Global Value / Our Works Value: 200.000 € / 90.000€



▪ Renewal of the Public Spaces of the Natural Reserve Dunas S. Jacinto

Entity: Polis Litoral Ria de Aveiro /Atelier Beco da Bela Vista
Specialties: Global Project
Project: 2010
Built:
Global Value / Our Works Value: 600.000 € / 160.000€



▪ **School Infrastructures Planned in the Emergency Programme 2009/2010 (Internat. Tenter)**

Entity: Casais/Eusébios/MonteAdriano - Minist. Educ. Marocco

Specialties: Global Project

Project: 2010

Built: ☐

Global Value / Our Works Value: - € / - €



▪ **IP2 - Bridge on Ribeira de Meimoa (Fundão) - Assessment on the longitudinal behaviour and stresses of the fixed bearing devices**

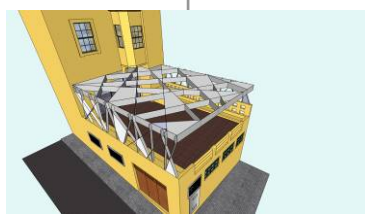
Entity: CONDURIL - Engenharia, S.A.

Specialties: Structures

Project: 2010

Built: ☐

Global Value / Our Works Value: - € / - €



▪ **Coverage of the terrace on Confeitaria TAVI - Porto**

Entity: DEWPOINT - Refrigeração e Equipamentos Hoteleiros

Specialties: Structures

Project: 2010

Built: 2010

Global Value / Our Works Value: - € / - €

grupo Portucel Soporcel

▪ **Dining Room at Paper Mill in Lavos - Figueira da Foz**

Entity: Portucel - Soporcel

Specialties: Structures and SSH

Project: 2010

Built:

Global Value / Our Works Value: - € / - €



▪ **Resource and Rehabilitation of the Foundations of Valença Internacional Bridge, including Technical Assistance**

Entity: Rede Ferroviária Nacional, REFER, E.P.E.

Specialties: Foundations and Structures, Ambient and SSH

Project: 2010

Built:

Global Value / Our Works Value: 6.200.000 € / 6.200.000€



▪ **Support Structure for billboards of Shopping Center Odivelas Parque - Odivelas**

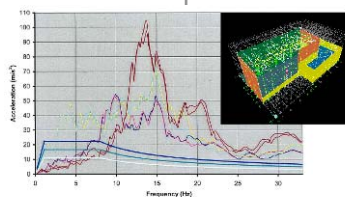
Entity: JOSÉ FILIPE & FILHO, Lda.

Specialties: Structures

Project: 2010

Built: 2010

Global Value / Our Works Value: - € / - €



▪ New Zealand Inter Islands HVDC POLE 3 Project/Converter Station - Haywards Dynamic seismic assessment

Entity: TAYLOR DEVICES EUROPE SCRL / SIEMENS

Specialties: Structures

Project: 2010

Built:

Global Value / Our Works Value: - € / - €



▪ Ditherington Mills-UK - Slab Vibration Control

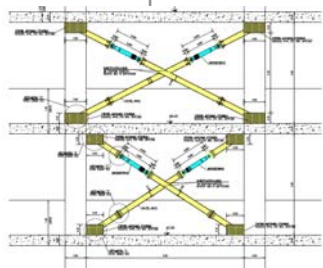
Entity: : TAYLOR DEVICES EUROPE SCRL

Specialties: Structures

Project: 2010

Built:

Global Value / Our Works Value: - € / - €



▪ GREECE - ARVANITI PROJECT - Athens - Anti-seismically damped bracing

Entity: Taylor Devices

Specialties: Consultant

Project: 2011 / on going

Global Value / Our Works Value: - € / - €



▪ Single family house in Vilarelho, Caminha

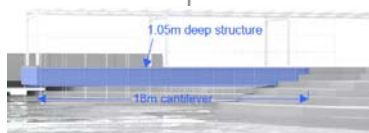
Entity: Dr. Daniel Bessa

Specialties: Hydraulic, Thermal behavior and Gas

Project: 2003

Built: 2010

Global Value / Our Works Value: - € / - €



▪ ABU-DHABI - Louvre Abu Dhabi - Tuned Mass Dampers Adoption for "Ductal" Garden Canopy cantilever

Entity: Taylor Devices

Specialties: Consultant

Project: 2011/ on going

Global Value / Our Works Value: - € / - €



▪ HUNGARY - Dunamenti stack wind damping

Entity:: Taylor Devices

Specialties: Consultant

Project: 2009 / on going

Global Value / Our Works Value: - € / - €



taylor devices
Leader in shock control

- **VIETNAM- Vanphong - Heating system chimney wind damping**

Entity: Taylor Devices
Specialties: Consultant
Project: 2009 / on going
Global Value / Our Works Value: - € / - €



taylor devices
Leader in shock control

- **LYBIA - Tripoli War Museum Steel roof canopy support system with thermal behavior allowance STU/damper devices**

Entity: Taylor Devices
Specialties: Consultant
Project: 2010 / On going
Global Value / Our Works Value: - € / -



taylor devices
Leader in shock control

- **PORTUGAL - Coima Viaduct 1 - Fluid viscous damper application**

Entity: Taylor Devices
Specialties: Consultant
Project: 2010 / On going
Global Value / Our Works Value: - € / - €



taylor devices
Leader in shock control

- **SPAIN - AVE QUEJIGARES-VTE LOJA - Viaduct over Rio Frio - Longitudinal dampers**

Entity: Taylor Devices
Specialties: Consultant
Project: 2011 / On going
Global Value / Our Works Value: - € / - €



- **Touristic Resort "Hardedge Zambujal" - Palmela**

Entity: FASE - Estudos e Projectos, S.A.
Specialties: Foundations, Structures and Hydraulic and landscaping
Project: 2010
Built:
Global Value / Our Works Value: - € / - €



- **Landscaping Project of Pateira de Frossos in within Program of Polis Litoral Ria de Aveiro**

Entity: BBV – Beco da Bela Vista Arqº
Specialties: Structures
Project: 2010/on going
Built: on going
Global Value / Our Works Value: - € / - €



▪ **House of Memory and Arts Platform in Guimarães**

Entity: Câmara Municipal de Guimarães
Specialties: Foundations, Structures and Hydraulic
Project: 2010/ongoing
Built: ongoing
Global Value / Our Works Value: 2.300.000 € / 300.000€



▪ **Subconcession of Highway of "Médio e Baixo Alentejo" – Development Process Errors and Omissions**

Entity: CONDURIL - Engenharia, S.A.
Specialties: Consulting Structures
Project: 2010
Built:
Global Value / Our Works Value: - € / - €



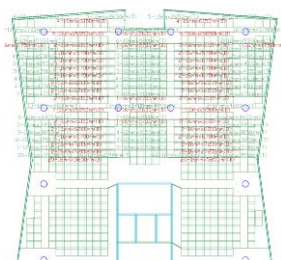
▪ **Building Slabs of Marina Les Portes Océanes Lote L2 - Casablanca**

Entity: EUSÉBIOS - Engenharia, S.A.
Specialties: Structures and Hydraulic
Project: 2010
Built: -
Global Value / Our Works Value: - € / - €



▪ **Allotment "Nova Beira" – Beira, Moçambique**

Entity: Nicecover Group
Specialties: Allotment and architectural development
Project: 2010
Built: -
Global Value / Our Works Value: 200.000.000€ / 200.000.000€



▪ **Programme Casablanca Marina Les Portes Océanes - ILOT A4- Lot N°1: Gros Oeuvre**

Entity: EUSÉBIOS - Engenharia, S.A.
Specialties: Structures
Project: 2010
Built:
Global Value / Our Works Value: □ € / □ €



▪ **10 Houses at Mussulo – Angola**

Entity: BENFIN, S.A.
Specialties: Structures, Hydraulic and Electrical Infrastructures
Project: 2009
Built: 2009
Global Value / Our Works Value: 1.800.000€ / 600.000€



▪ “Design Factory” in Paredes

Entity: Câmara Municipal de Paredes
Specialties: Structures and Hydraulic
Project: 2010/ongoing
Built:
Global Value / Our Works Value: - € / - €



▪ Metallic Ladder for ELAIA LAGAR, S.A. - Ferreira do Alentejo

Entity: O FELIZ – Metalomecânica, S.A.
Specialties: Steel Structures
Project: 2010
Built: 2010
Global Value / Our Works Value: 30.000 € / 30.000€



▪ Support Structure of the Reactor for Santos Barosa, S.A. - Marinha Grande

Entity: EFACEC Ambience
Specialties: Steel
Structures Project: 2010
Built:
Global Value / Our Works Value: - € / - €



▪ Support structure for publicity

Entité: CLEARSPOT
Spécialités: Fondations and Structures
Project: 2010
Construction: 2010
Global Value / Our Works Value: 30.000 € / 10.000€



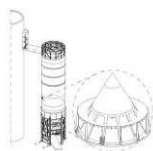
▪ Resource and rehabilitation of Av. Vasco da Gama - Sines

Entity: GIPP / Câmara Municipal de Sines
Specialties: Hydraulic, Gas, Electricity, Telecommunications and Structures
Project: 2010
Built: ongoing
Global Value / Our Works Value: : € 4.600.000 / -



▪ Provisional stabilization of vaults - Monchique Convent, Porto

Entity: Sociedade Clemente Meneres, Lda.
Specialties: Structures
Project: 2010 / ongoing
Built:
Global Value / Our Works Value: - € / - €



▪ Silo for Ciment (2.000 ton) - Morocco

Entity: EFACEC AMBIENTE / ASMENT TEMARA CIMPOR

Specialties: Structures

Project: 2010

Built: ☐

Global Value / Our Works Value: 1.000.000 € / 1.000.000€



▪ Silo for Ash (1.000 ton) Matola - Mozambique (Tender)

Entity: EFACEC AMBIENTE / CIMPOR

Specialties: Structures

Project: 2010

Built: 2010

Global Value / Our Works Value: 600.000 € / 600.000 €



▪ Structures for supporting lighting in Dakar, Lisbon and Porto

Entity: CASTROS - Iluminações Festivas, S.A.

Specialties: Metallic structures

Project: 2010

Built: 2010

Global Value / Our Works Value: - / -



▪ Secil Martingança (factory of Montijo) – Fondations of the towers A and B

Entity: Barbosa & Guimarães

Specialties: Consultancy

Project: 2010



▪ Tratolixo - Access roads to the CDA (Mafra)

Entity: Mota-Engil

Specialties: EarthWorks, Hydraulic and Access roads

Project: 2011

Built: 2011

Global Value/Our Works Value: - € / - €



▪ Structure for support platform to EFACEC

Entity: José Filipe Filhos, Lda.

Specialties: Structures

Project: 2011

Built: 2011

Global Value/Our Works Value: - € / - €



▪ Lintel to the “Portas da Venezuela” building

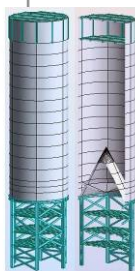
Entity: Dewpoint, Lda.

Specialties: Structure

Project: 2011

Built: 2011

Global Value/Our Works Value: - € / - €



▪ Silo for Cement (2.000 ton)

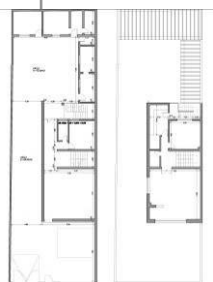
Entity: Efacec Engenharia / Lafarge Maroc Boouskoura

Specialties: Structure

Project: 2012

Built: -

Global Value/Our Works Value: 1.000.000€ / 1.000.000€



▪ Renovation of family house in Mainga - Luanda

Entity: Mário Maia

Specialties: structures and Hydraulic

Project: 2011

built: 2011

Global Value/Our Works Value: - € / - €



▪ Family house at Rua da India, Porto

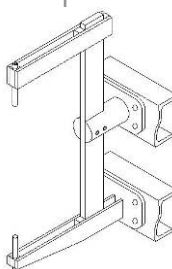
Entity: Penaland, Mazarina

Specialties: Structures and Hydraulic

Project: 2011

built: 2012

Global Value/Our Works Value: - € / - €



▪ Support structures for statuary

Entity: - é + arquitectura

Specialties: Structures

Project: 2011

built: 2012

Global Value/Our Works Value: - € / - €

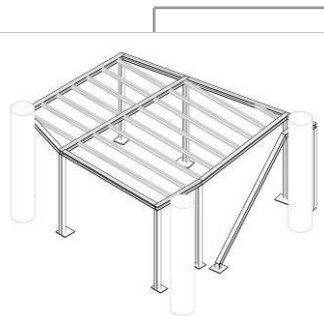


▪ Bridge of Stº Estêvão over the Rio Arade

Entity: CONDURIL - Engenharia, S.A.

Specialties: Study about Structure and Foundations

Project: 2011



▪ Mezzanine structure to a store in Shopping Odivelas Parque

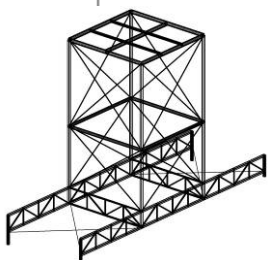
Entity: Grill Store / Odivelas Parque

Specialties: Structures

Project: 2011

Built:

Global Value/Our Works Value: - € / - €



▪ Platform for Inspection of Chimneys

Entity: Continental Mabor

Specialties: Structures

Project: 2011

Built:

Global Value/Our Works Value: - € / - €



▪ Enlargement of the viaduct over Ribeira de Covelas – A3

Entity: Newton/Brisa

Specialties: Consultancy

Project: -



▪ Wastewater treatment plant of Beni Yakhlef

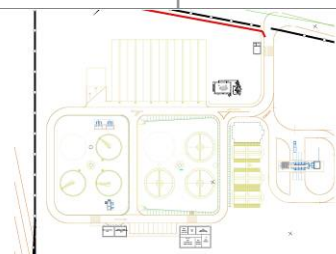
Entity: Eusébios, S.A.

Specialties: Structures and Foundations

Project: 2011

Built:

Global Value/Our Works Value: - € / - €



▪ Wastewater Treatment plant of Echallate

Entity: Eusébios, S.A.

Specialties: Structures and Foundations

Project: 2011

Built:

Global Value/Our Works Value: - € / - €



▪ Marques Gomes Farm - Stability and Support Walls

Entity: FIIFI SELECTA, SGFII, S.A.

Specialties: Earthworks and structures

Project: 2011

Built: ongoing

Global Value/Our Works Value: - € / - €



▪ Namibe Roadway - Angola

Entity: MAC PC
Specialties: Roads and streets, Hydraulic
Project: 2011
Built:
Global Value/Our Works Value: - € / - €



▪ Electrical infrastructure in the town of Belize - Angola (1st Phase)

Entity: ELCCAM
Specialties: Structures
Project: 2011
Built: on going
Global Value/Our Works Value: - € / - €



▪ Study about viaducts on western line

Entity: CONDURIL - Engenharia, S.A.
Specialties: Technical consultancy
Project: 2011
Built:
Global Value/Our Works Value: - € / - €



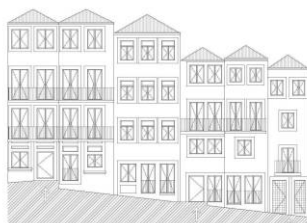
▪ Morro da Sé Rehousing Program in Porto – A operation

Entity: Porto Vivo SRU
Specialties: Structures and CDW
Project: 2011
Built: on going
Global Value/Our Works Value: - € / - €



▪ Morro da Sé Rehousing Program in Porto – E2 operation

Entity: Porto Vivo SRU
Specialties: Structures and CDW
Project: 2011
Built: on going
Global Value/Our Works Value: - € / - €



▪ Morro da Sé Rehousing Program in Porto – H operation

Entity: Porto Vivo SRU
Specialties: Structures and CDW
Project: 2011
Built: on going
Global Value/Our Works Value: - € / - €



▪ Morro da Sé Rehousing Program in Porto – B operation

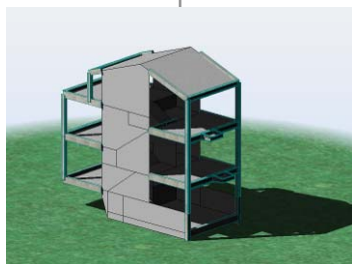
Entity: Porto Vivo SRU

Specialties: Structures

Project: 2011

Built: on going

Global Value/Our Works Value: - € / - €



▪ Construction of trade building in Matosinhos

Entity: Vivenor - Empreendimentos Imobiliários, Lda.

Specialties: Structures

Project: 2011

Built: on going

Global Value/Our Works Value: - € / - €



▪ Dammings

Entity: Somincor-Sociedade Mineira de Neves Corvo S.A.

Specialties: Earthworks and Structures

Project: 2011

Built: -

Global Value/Our Works Value: - € / - €



▪ Renovation and Expansion of Installations in Leça da Palmeira, Matosinhos

Entity: ZELIMEC - Gestão de Imóveis e Investimentos, S.A.

Specialties: Structures

Project: 2011

Built: on going

Global Value/Our Works Value: - € / - €



▪ Bridge over the Benguela Railroad, Bridges over rivers Kune, Juvaca, Buim, Memba, and Kuíme Cutato in Andulo - Angola

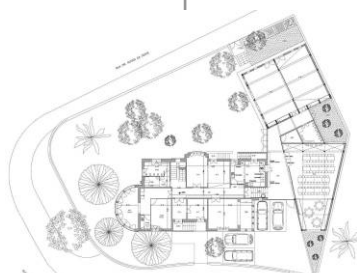
Entity: INEA - Instituto de Estradas de Angola

Specialties: Analysis and Global Assessment of the Project

Project: 2011

Built: on going

Global Value/Our Works Value: - € / - €



▪ Rehabilitation of kindergarten at Praça do Império, Porto

Entity: Eurythmia - Jardim de Infância, Lda.

Specialties: Structures

Project: 2011

Built: 2011

Global Value/Our Works Value: - € / - €



▪ Music Academy of Santa Cecília - Renovation and Expansion of Installations

Entity: Academia de Música de Santa Cecília

Specialties: Foundations, Structures and hydraulics

Project: 2011 / on going

Built: ongoing

Global Value/Our Works Value: - € / - €



▪ Outer wall of the School Dr. Pascoal José de Mello – Ansião

Entity: Parque Escolar

Specialties: Structures

Project: 2011

Built: on going

Global Value/Our Works Value: - € / - €



▪ Winery of Quinta da Leda

Entity: A. FERREIRA

Specialties: Consultancy of metallic structures

Project: 2011 / on going

Built: -

Global Value/Our Works Value: - € / - €



▪ Roadway in Alto Sunde – Cabinda, Angola

Entity: MAC PC - Mário Maia

Specialties: Roads and roadways

Project: 2011

Built: ongoing

Global Value/Our Works Value: - € / - €



▪ Urban Requalification of Belize Village, Cabinda (Angola)

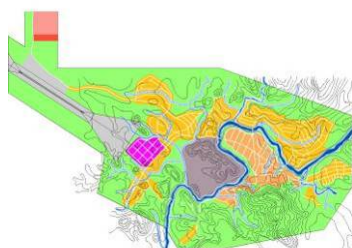
Entity: MAC PC

Specialties: Architecture, Structures and Electricity

Project: 2011 / ongoing

Built: -

Global Value/Our Works Value: - € / - €



▪ Urban Requalification of Bucu Zau Village, Cabinda (Angola)

Entity: MAC PC

Specialties: Architecture, Structures and Electricity

Project: 2011 / on going

Built: -

Global Value/Our Works Value: - € / - €



▪ Revamping of the Public Spaces of Eixo Barroco

Entity: Câmara Municipal de Lamego

Specialties: Structures, Hydraulics, Security and SSH

Project: 2011 / ongoing

Built:

Global Value/Our Works Value: - € / - €



▪ Access to the New High School - Anadia

Entity: Parque Escolar EPE

Specialties: Access roads

Project: 2011 / on going

Built:

Global Value/Our Works Value: - € / - €



▪ Water Supply to the New Centrality (Bailundo, Porto Amboim, Sumbe and Waku Kungo) - (Contest)

Entity:

Specialties: Treatment Process and Equipment, General Projects and Access streets

Project: 2011 / on going

Built:

Global Value/Our Works Value: - € / - €



▪ Renovation of the Altar-mor of Oiã Church

Entity: Paróquia de Oiã

Specialties: Structures

Project: 2011 / ongoing

Built: ongoing

Global Value/Our Works Value: - € / - €

PARTNER'S PROFESSIONAL CURRICULUM

SPECIAL REFERENCES



▪ The New Most Holy Trinity Church, at The Sanctuary of Fátima

Entity: Santuário de Fátima

Specialties: Foundations and Structures

Project: 2000

Built:

Global Value / Our Works Value: € 50 000 000 / € 447 590

This structure was awarded the 2009 International Association for Bridge & Structural Engineering's Outstanding Structure Award. It was also awarded the Portuguese Secil prize in Civil Engineering in 2007.



▪ New Bascule Bridge at Leixões Harbor

Entity: APDL - Administração dos Portos do Douro e Leixões

Specialties: Coordination, Supervision, Consulting and Steel structures

Project: 2006

Built: 2006/2007

Global Value / Our Works Value: 7.000.000 € / - €

Awarded with the EUROPEAN - STEEL DESIGN AWARDS, by ECCS - European Convention for Constructional Steelwork.

Stands out as the fourth largest bascule bridge in the world. Presents a unique span of 92 meters. Includes 1,300 tons of steel.



▪ Renewal of the Landscape of the Riverside of the Tâmega in Chaves, between San Roque Bridge and Santa Cruz WSTP

Entity: Programa POLISCHAVES

Specialties: Land Movement, Architecture, access roads, Foundations, Structures, Hydraulic e Electricity

Project: 2004

Built: 2008

Global Value / Our Works Value: 1.000.000€ / - €

National Landscape Architecture Award 2009 - PNAP of Outside Spaces, Equipments e Infrastructure. Awarded to Arq. Luís Guedes de Carvalho (Atelier Beco da Bela Vista).



▪ Kaos Suspenso

Entity: MERGELAB / Câmara Municipal de Ponte de Lima

Specialties: Technical specification for the implementation of 'entanglement' using prestressing strands of 0.6" diameter

Project: 2010

Built: 2010

Global Value / Our Works Value: 10.000 €

1st Prize at the 6th International Garden Festival done between May and October 2010 in Ponte de Lima, with the theme "Kaos in the Garden". Its authors are the architects Jose Pedro Torres and Pedro Negrão of Architecture office MERGELAB.

BRIDGES, VIADUCTS AND TUNNELS



- **Access viaducts to the railway bridge 25 Abril over the Valley of Alcantara and Avenue of Ceuta in Lisboa**

Entity: GNFL - Gabinete do Nó Ferroviário at Lisboa

Specialties: Global Project

Project: 1993

Built: 1998

Global Value / Our Works Value: 12.000.000 € / 12.000.000€



- **Viaduct on the EN 205-4 in subsection Braga / Freixo A3 - Porto / Valença**

Entity: BRISA

Specialties: Engineering Projects

Project: 1996

Built: 1998

Global Value / Our Works Value: 5.000.000 € / 5.000.000€



- **Bridge over the River Cávado in subsection Braga/Freixo A3 - PORTO/VALENÇA**

Entity: BRISA

Specialties: Engineering Projects

Project: 1996

Built: 1998

Global Value / Our Works Value: 5.000.000 €/5.000.000€



- **Lavandeiras Bridge above Canal of S. Roque in Aveiro**

Entity: Programa AVEIROPOLIS

Specialties: Engineering Projects

Project: 2005

Built: 2005

Global Value / Our Works Value: 300.000 € / 300.000€



- **Bascule Bridge above Canal das Pirâmides in Aveiro**

Entity: Programa AVEIROPOLIS

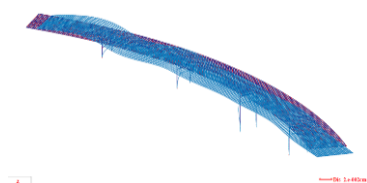
Specialties: bascule bridge with metallic structure

Project: 2006

Built: 2006

Global Value / Our Works Value: 300.000 € / 300.000€

Análise Modal - Longitudinal



▪ Conception/Built and of Viaduct of Nagozela, IP8 - Stª Comba Dão (Tender)

Entity: CONDURIL - Engenharia, S.A. / IEP - Instituto das Estradas de Portugal
Specialties: Structures
Project: 2004



▪ General Inspection to 12 Bridges

Entity: ICERR
Specialties: Foundations and Structures
Project: 2001



▪ EN361 - Bridge of "A dos Francos" over Rio Arnóia, Óbidos

Entity: EP - Estradas de Portugal, EPE Specialties: Structures
Project: 2005
Built: 2007
Global Value / Our Works Value: 400.000 € / 400.000€



▪ EN114 - Bridges over Ribeiras de Perofilho and Vale da Pedreira - Resouce/Rehabilitation and Enlargement, Santarém

Entity: EP - Estradas de Portugal, EPE
Specialties: Structures
Project: 2005
Built: 2007
Global Value / Our Works Value: 350.000 € / 350.000€



▪ EN235 - EN1 / Canha Bridge over Cértima River - Reinforcement and Enlargement

Entity: EP - Estradas de Portugal, EPE
Specialties: Structures
Project: 2005
Built: 2007
Global Value / Our Works Value: 2.900.000 € / 2.900.000€



▪ Milhundos Bridge over River Cavalum - EN 320 (Km 13+142) in Anadia

Entity: EP - Estradas de Portugal, EPE
Specialties: Structures
Project: 2005
Built: 2007
Global Value / Our Works Value: 200.000 € / 200.000€



▪ Pedestrian walkways and Support for Pipeline Greire - Pedorido, over Rio Sardoura and Ribeira de Sá

Entity: AdDP - Águas do Douro e Paiva, S.A.

Specialties: Structures

Project: 2004

Built: 2005

Global Value / Our Works Value: - € / - €



▪ General Coordination of 14 Bridges Underwater Inspections

Entity: EP - Estradas de Portugal, EPE

Specialties: Structures

Project: 2005 / 2007



▪ Rehabilitation and Enlargement of Meinedo Bridge over the Rio Sousa, EN320

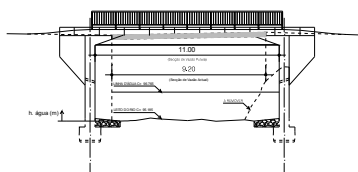
Entity: EP - Estradas de Portugal, EPE

Specialties: Structures

Project: 2005

Built: 2006

Global Value / Our Works Value: 350.000 € / 350.000€



▪ Pontoon Bridge of Vila Nova over Rio Ovelha

Entity: Socopul /Câmara Municipal de Amarante

Specialties: Foundations, Structures and Hydraulic Study

Project: 2004

Built: 2005

Global Value / Our Works Value: - € / - €



▪ IC9 - ALBURITEL / TOMAR (IC3)

Entity: EP - Estradas de Portugal, E.P.E.

Specialties: Structures

Project: 2003

Built: 2005 / 2007

Global Value / Our Works Value 26.500.000 € / -€



▪ Rehabilitation Study of a roman bridge over the Rio Vizela in Santo Tirso (Tender)

Entity: Câmara Municipal de Stº Tirso

Specialties: Structures

Project: 2003

Built: -

Global Value / Our Works Value: - € / - €



▪ E.N. 232 - Road by-pass in Gouveia including Viaduct

Entity: IEP - Instituto das Estradas de Portugal
Specialties: Foundations, Structures, Earthworks, Hydraulic
Project: 2001
Built: 2003
Global Value / Our Works Value: 9.000.000 € / 9.000.000€



▪ Road by-pass on EN 14 between Celeirós and the rail station of Braga - Tunnel of station tunnel

Entity: ICOR
Specialties: Global Project
Project: 2001
Built: 2002
Global Value / Our Works Value: 2.750.000 € / 2.750.000€



▪ Rossado Bridge and Rossas Bridge on EN 224 - Extension and improvements

Entity: JAE - Junta Autónoma de Estradas
Specialties: Foundations and Structures
Project: 1997
Built: 2000
Global Value / Our Works Value: - € / - €



▪ Viaduct of Avenida D. João II and Avenida Vasco da Gama (VL9) in Vila Nova de Gaia

Entity: Câmara de Vila Nova de Gaia
Specialties: Structures prestressed concrete with 154 m
Project: 1998 / 1999
Built: 2004
Global Value / Our Works Value: 5.000.000 € / 5.000.000€



▪ Viaduct V1 - Extension of Av. Estados Unidos da América in Lisboa - Verifying of Final Design

Entity: Paviliz
Specialties: Global Projects
Project: 1998
Built: 1999
Global Value / Our Works Value: 2.100.000 € / 2.100.000€



SOCOPUL S.A.

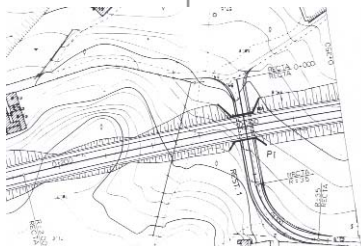
■ Conception/Built of Arquinho Queimado Road Station in Amarante (Tender)

Entity: Socopul, S.A.

Specialties: Architecture, Structures, Electricity and Hydraulic

Project: 2005

Global Value / Our Works Value: 3.000.000 € / - €



■ Undercrossing of Restabelecimento 1, included on VL3 – N109/Madalena

Entity: Câmara Municipal de Vila Nova de Gaia

Specialties: Structures and Hydraulic

Project: 2003

Built:

Global Value / Our Works Value: - € / - €



■ Ameixoeira Tunnel in CRIL, Lisboa - Pre-Project (Tender)

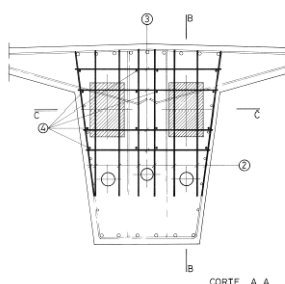
Entity: IEP - Instituto das Estradas de Portugal

Specialties: Global Project

Project: 2003

Built: -

Global Value / Our Works Value: - € / - €



■ Duplication of Bridge over River Neiva

Entity: JAE- Direcção dos Serviços de Pontes

Specialties: Structures

Project: 1989

Built: -

Global Value / Our Works Value: - € / - €



■ Engineering structure at Rua das Lajes (Via 13) PS1, PS2 e PS3 in Vila Nova de Gaia

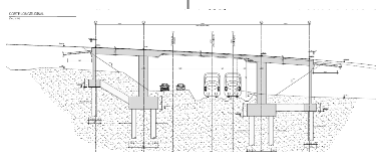
Entity: Câmara Municipal de Vila Nova de Gaia

Specialties: Structures

Project: 1989

Built:

Global Value / Our Works Value: - € / - €



■ Overpass to the railroad on Linha do Minho-KM 49+950, Barcelos

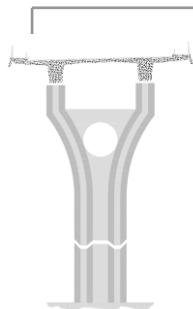
Entity: GEESTRADA, Lda. / Câmara Municipal de Barcelos

Specialties: Structures

Project: 1998

Built: 2007

Global Value / Our Works Value: 500.000 € / - €



▪ Bridge over Ribeira das Cabras on IP5

Entity: JAE - Junta Autónoma de Estradas
Specialties: Earthworks, Foundations and Structures
Project: 1998
Built: 2001
Global Value / Our Works Value: 2.250.000 € / 2.250.000€



▪ Rail Bridge over Coura River - Reinforcement

Entity: CP - Caminhos de Ferro Portugueses
Specialties: Steel structures
Project: 1997
Built: 1998
Global Value / Our Works Value: 2.300.000 € / 2.300.000€



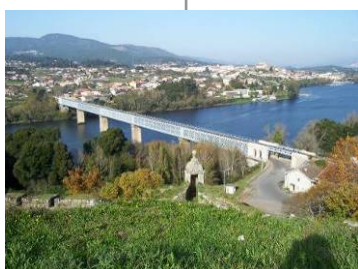
▪ Tunnel of North Ring road on A11, Braga

Entity: EP - Estradas de Portugal, EPE
Specialties: Structures on reinforced concrete including temporary bracing timbering
Project: 2002
Built: 2003
Global Value / Our Works Value: - € / - €



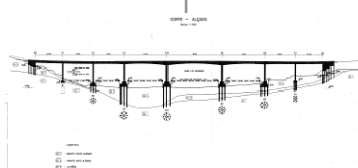
▪ EN 222 – Enlargement and Improvement of 4 wharf outskirts of Castelo de Paiva

Entity: ICERR
Specialties: Structures and Hydraulic
Project: 2003
Built: 2003
Global Value / Our Works Value: 3.000.000 € / - €



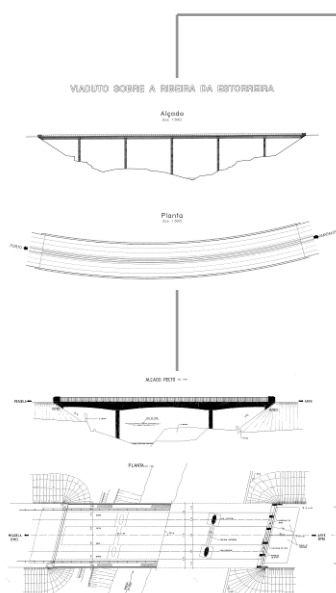
▪ Resource and rehabilitation of foundations at Valença International Bridge

Entity: REFER
Specialties: Structures of brickwork and steel
Project: 2005
Built: 2008
Global Value / Our Works Value: 2.200.000 € / 2.000.000



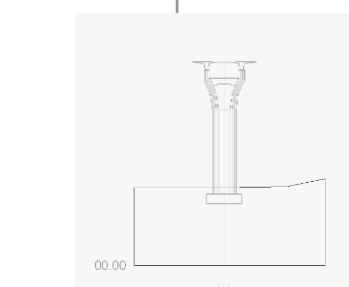
▪ New Bridge of Entre-os-Rivers over Rio Douro

Entity: JAE - Junta Autónoma de Estradas
Specialties: Foundations and Structures
Project: 1996 / 2002
Built: -
Global Value / Our Works Value: 5.500.000 € / 5.500.000€



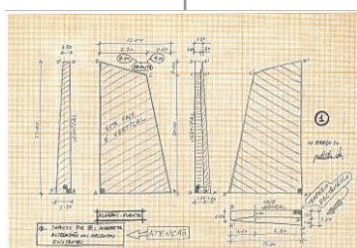
▪ **Viaduct over Ribeira de Estorreira, including road Penafiel-Amarante on IP4**

Entity: Brisa
Specialties: Foundations and Structures
Project: 1993
Built: 1995
Global Value / Our Works Value: 2.100.000 € / 2.100.000€



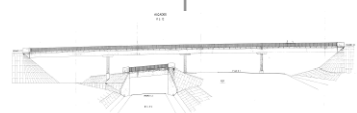
▪ **Bridge over Ribeira do Pêgo**

Entity: Câmara Municipal de Viana do Castelo
Specialties: Structures
Project: 1992
Built: -
Global Value / Our Works Value: - € / - €



▪ **IC4 – Bridges on Road by-pass of Aljezur (Preliminary Study)**

Entity: MOPTC - DIRECÇÃO DOS SERVIÇOS DE PONTES
Specialties: Structures
Project: 1998
Built: -
Global Value / Our Works Value: - € / - €



▪ **Structure of the Artistic Intervention at PI on union of EN12 with EN107, Porto**

Entity: MOPTC e JAE - Junta Autónoma de Estradas
Specialties: Structures
Project: 1994
Built: -
Global Value / Our Works Value: - € / - €

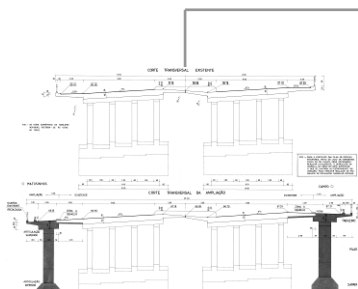


▪ **Preliminary Study of Via 2, in VILA NOVA DE GAIA**

Entity: Câmara Municipal de Gaia
Specialties: Structures
Project: 1987
Built: -
Global Value / Our Works Value: - € / - €

▪ **Via 8 (P.P.1, P.I.2, P.I.3 and P.S.4), Vila Nova de Gaia**

Entity: Câmara Municipal de Vila Nova de Gaia
Specialties: Structures
Project: 1989/1990
Built: 2004
Global Value / Our Works Value: - € / - €



▪ Road by-pass at E.N.208 and E.N.15 between E.N.107 in SENDIM and E.N.15 in CAMPO (P.S.4, P.S.5 and P.I.10)

Entity: MHOP / JAE - Junta Autónoma de Estradas

Specialties: Foundations and Structures

Project: 1984 / 1996

Built:

Global Value / Our Works Value: - € / - €

PUBLIC BUILDINGS



▪ Department of Biology, University of Aveiro in Aveiro

Entity: Universidade de Aveiro

Specialties: Structures

Project: 1990

Built: 1991

Global Value/Our Works Value: - € / - €



▪ Centre Building of Maia Pole Central Services

Entity: Câmara Municipal da Maia

Specialties: Foundations and Structures

Project: 1993

Built: 1997

Global Value / Our Works Value: 8.500.000 € / 2.500.000€



▪ Court of Ponte de Lima

Entity: Ministério da Justiça

Specialties: Structures

Project: 1995

Built:

Global Value / Our Works Value: 3.000.000 € / 750.000€



▪ City Council of Maia

Entity: Câmara Municipal da Maia

Specialties: Structures

Project: 1992

Built:

Global Value / Our Works Value: 15.000.000 € / 4.000.000€



▪ New building of ISMAI, on Maia

Entity: MAIÊUTICA - Cooperativa de Ensino Superior, SARL
Specialties: Foundations and Structures
Project: 1998
Built: 2000
Global Value / Our Works Value: 12.500.000 € / 3.250.000€



▪ Refurbishment and Expansion of the Biomedical Sciences Institute Abel Salazar in Porto

Entity: Universidade do Porto
Specialties: Foundations, Structures and Hydraulic
Project: 1995
Built: 1999
Global Value / Our Works Value: 15.000.000 € / 3.500.000€



▪ Warehouse building for ELECTRO-CERAMICA in Vila Nova de Gaia

Entity: ELECTRO-CERAMICA
Specialties: Structures
Project: 1995/1996
built: Structures
Global Value / Our Works Value: - € / - €



▪ Refurbishment of the access to the Reitoria da UNIVERSIDADE DO PORTO

Entity: Universidade do Porto
Specialties: Structures
Project: 1995
Built: 2004
Global Value / Our Works Value: - € / - €



▪ Building of Associação para o Parque da Ciência and Tecnologia of Porto (A.P.C.T.P.) in Maia

Entity: A.P.C.T.P.
Specialties: Structures Project: 1995
Built: 2004
Global Value/Our Works Value: - € / - €



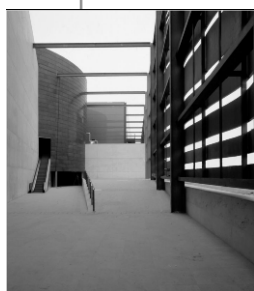
▪ Canteen Building and Students Residence of UNIVERSIDADE DO PORTO

Entity: Serviços de Acção Social da Universidade do Porto
Specialties: Road Accessabilities and Structures
Project: 1994/ 1996
Built: 1996
Global Value/Our Works Value: 6.500.000 € / 2.000.000



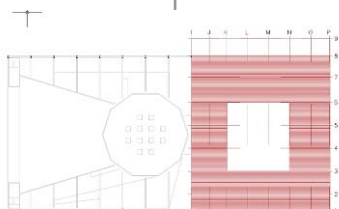
■ VIII Cimeira Ibero-Americana - Adaptation of the Customhouse in Porto

Entity: Ministério dos Negócios Estrangeiros
Specialties: Architecture, Structures, AVAC and Hydraulic
Project: 1998
Built: 1998
Global Value/Our Works Value: - € / - €



■ Future Pavilion of Expo 98

Entity: PARQUE EXPO 98
Specialties: Structures
Project: 1995
Built: 1997
Global Value/Our Works Value: 9.000.000€ / 2.500.000€



■ General secretary of Presidency Council of Ministers - Reshuffle of Future Pavilion on Expo 98 -Lisboa

Entity: Parque das Nações
Specialties: Earthworks, Foundations and Structures
Project: 1999/2000
Built: 2001
Global Value/Our Works Value: 800.000€ / 200.000€



■ Interpretive Center and Reception on Archaeological Station of Miróbriga in Santiago Cacém

Entity: IPPAR / Arqª Paula Santos
Specialties: Structures
Project: 1998
Built: 1998
Global Value/Our Works Value: - € / - €



■ Vizela Healthcare center

Entity: Sub-Região de Saúde de Vizela / Câmara Municipal de Vizela
Specialties: Hydraulic, Foundations and Structures
Project: 2002/2004
Built: 2007
Global Value/Our Works Value: 2.600.000 € / - €



■ Reception and Support Building of Citânia of Stª Luzia - Viana do Castelo

Entity: IPPAR / Arqª Paula Santos
Specialties: Foundations, Structures and Hydraulic
Project: 2002/2004
Built:
Global Value/Our Works Value: - € / - €



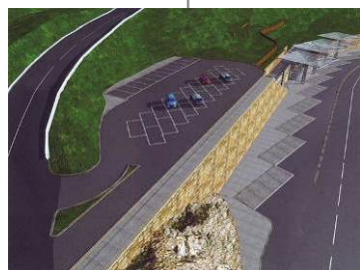
▪ University Residence of Pole of Health Sciences, University of Coimbra

Entity: Universidade de Coimbra
Specialties: Hydraulic and Structures
Project: 2002
Built:
Global Value/Our Works Value: - € / - €



▪ Refurbishment of the Courthouse of Chaves

Entity: IGFPJ
Specialties: Hydraulic and Structures
Project: 2004/2006
Built: 2005
Global Value/Our Works Value: - € / - €



▪ Road Station and car park of Queimado in Amarante (tender)

Entity: Câmara Municipal de Amarante
Specialties: Arq., Electricity, Hydraulic and Structures
Project: 2005
Built: 2008
Global Value/Our Works Value: 3.000.000 € / - €



▪ Expansion and Refurbishment of factory and park of Large Dimensions of Urban Transport of CP

Entity: Metro do Porto
Specialties: Engineering Projects
Project: 2005/2007
Built: 2008
Global Value/Our Works Value: 2.000.000 € / 2.000.000€



▪ Renewal of the City Council Building of Vila Real de Stº António

Entity: Câmara Municipal de Vila Real de Stº António
Specialties: Structures
Project:
Built:
Global Value/Our Works Value: 3.000.000 € / 1.000.000€

INDUSTRIAL AND COMMERCIAL BUILDINGS



▪ Cold storage Facility in MARL for "FRUIT NUFRI" in Lisbon

Entity: FRUTAS NUFRI, Lda.
Specialties: Global Project
Project: 2005
Built: 2007
Global Value/Our Works Value: 2.500.000€ / 2.500.000€



▪ Maia Business Park: Entrance Building, South warehouse, Packaging return building, Central Warehouse and interconnection Tunnel

Entity: MODIS, Distribuição
Specialties: Structures
Project: 2006/2007
Built: 2008
Global Value/Our Works Value: 68.000.000€/20.000.000€



▪ Grinding Unit in Setubal for CNE - Cimentos Nacionais e Estrangeiros, S.A.

Entity: CNE - Cimentos Nacionais e Estrangeiros, S.A.
Specialties: Global Project
Project: 2004
Built: 2005
Global Value/Our Works Value: 18.600.000€ / 18.600.000€



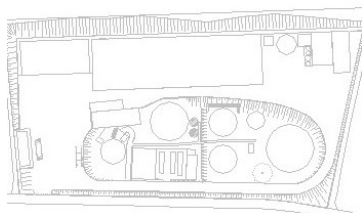
▪ Refrigerated Warehouse for INFRISA, S.A., Vila do Conde

Entity: INFRISA, S.A.
Specialties: Global Project
Project: 2002
Built: 2003
Global Value/Our Works Value: 2.000.000€ / 2.000.000€



▪ Refurbishment and Enlargement of Building for Caves da Raposeira in Lamego

Entity: Caves da Raposeira, S.A.
Specialties: Global Project
Project: 2005
Built:
Global Value/Our Works Value: 1.500.000€ / 500.000€



▪ Zagope building quarter for biogas production, Tondela

Entity: Zagope
Specialties: Global Project
Project: 2002/2005
Built:
Global Value/Our Works Value: 4.500.000€ / 3.000.000€



▪ **Department of winemaking at Quinta da Leda in Vila Nova de Foz Coa**

Entity: A.A. Ferreira, S.A.(SOGRAPE)
Specialties: Structures
Project: 1999
Built:
Global Value/Our Works Value: - € / - €



▪ **Expansion of the installations at the Quinta da Aveleda, Penafiel**

Entity: A.A. Ferreira, S.A. (SOGRAPE)
Specialties: Structures
Project: 1997
Built:
Global Value/Our Works Value: - € / - €



▪ **Refurbishment of installation for SCHLUMBERGER, Vila Nova de Famalicão**

Entity: SCHLUMBERGER
Specialties: Earthworks, Structures
Project: 1997/1998
Built:
Global Value/Our Works Value: 6.000.000€ / 2.000.000€



▪ **Refurbishment and expansion the factory in Águeda for Sociedade portuguesa de AR LIQUIDO**

Entity: Sociedade portuguesa de AR LIQUIDO
Specialties: Structures
Project: 1996
Built:
Global Value/Our Works Value: - € / - €



▪ **Refurbishment of factory for Maronagrés (Apolo Cerâmicas, S.A.) in Ílhavo**

Entity: Apolo Cerâmicas, S.A.
Specialties: Structures
Project: 1997
Built:
Global Value/Our Works Value: - € / - €



▪ **Social Building for DAT-SHAUB - Industria Alimentar, in Arcozelo**

Entity: DAT-SHAUB - Industria Alimentar
Specialties: Structures and Hydraulic
Project: 1997/1999
Built:
Global Value/Our Works Value: - € / - €



▪ Cold Building in Perafita for LONGA VIDA □ Industrias Lácteas

Entity: LONGA VIDA - Industrias Lácteas

Specialties: Structures

Project:

Built:

Global Value/Our Works Value: - € / - €



▪ Distribution Center for NESTLÉ in Alverca

Entity: Nestlé Portugal

Specialties: Global Project

Project: 1990

Built: 1993

Global Value/Our Works Value: 9.000.000€ / 9.000.000€



▪ CAMAC – Expansion of the Finished Product Warehouse

Entity: CNB - Companhia Nacional de Borracha

Specialties: Architecture, Structures

Project: 1989

Built:

Global Value/Our Works Value: - € / - €



▪ "Biofuel Handling and Storage System" in Lavos, Figueira da Foz

Entity: CELBI

Specialties: Structures

Project:

Built:

Global Value/Our Works Value: - € / - €



▪ CONTINENTAL MABOR 50K – Renovations and Expansion of Production Plant in Lousado, Vila Nova de Famalicão

Entity: CONTINENTAL MABOR, S.A.

Specialties: Global Project

Project: 2001

Built: 2001

Global Value/Our Works Value: 12.500.000 € / 4.000.000€



▪ PM2 - Duplication of Paper Mill, in Lavos – Figueira da Foz

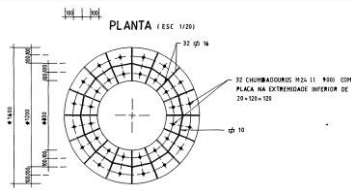
Entity: SOPORCEL

Specialties: Foundations and Structures (consortium)

Project: 1996

Built: 2000

Global Value/Our Works Value: 25.000.000 € / 8.000.000€



▪ Chimneys Dedusting of Factory for CIMPOR, in Figueira da Foz

Entity: CIMPOR

Specialties: Structures

Project: 1992

Built:

Global Value/Our Works Value: - € / - €



▪ (PM1a) Expansion of Paper Mill, in Lavos, Figueira da Foz

Entity: SOPORCEL

Specialties: Structures

Project: 1990

Built: 1991

Global Value/Our Works Value: - € / - €



▪ PM1 - New Paper Mill at Lavos, Figueira da Foz

Entity: SOPORCEL

Specialties: Structures

Project: 1989

Built:

Global Value/Our Works Value: 50.000.000 € / - €



▪ Building of Polymerizing for CIRES in Estarreja

Entity: CIRES - Companhia de Resinas Sintéticas, SARL

Specialties: Structures

Project:

Built:

Global Value/Our Works Value: - € / - €

FUEL SERVICE STATIONS

▪ GALP and TOTAL - 35 Fuel station for several concessionaires across the country

EDIFÍCIOS E INSTALAÇÕES COMERCIAIS



▪ Steel Structures of skylights in GAIASHOPPING

Entity: TEGOPI
Specialties: Structures steel
Project: 1995
Built: 1995
Global Value/Our Works Value: - € / - €



▪ Shopping Center "ODIVELAS PARQUE" including accesses in Odivelas

Entity: Consórcio Odivelas Parque
Specialties: Coordination of project design
Project: 2000 / 2001
Built: 2001/2002
Global Value/Our Works Value: 60.000.000€ / 750.000€



▪ FEIRA NOVA, Supermercados, S.A. in Stª Maria da Feira

Entity: IMORETALHO
Specialties: Coordination of project design
Project: 1998
Built: 1999
Global Value/Our Works Value: 15.000.000€ / 4.000.000€



▪ Setúbal Retail Park

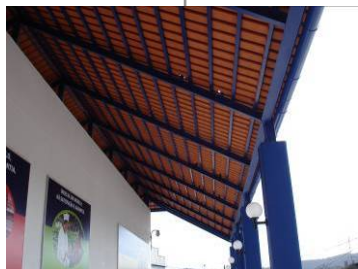
Entity: Sonae Imobiliária / Miller Developments
Specialties: Earthworks, Structures in reinforced concrete and steel
Project: 2001
Built: 2002
Global Value/Our Works Value: 15.000.000€ / 6.500.000€



▪ Coimbra Retail Park

Entity: MACE / SOGUIA / MILLER
Specialties: Foundations, Structures in reinforced concrete, steel and exterior arrangements
Project: 2001
Built: 2003
Global Value/Our Works Value: 10.000.000€ / 4.700.000€





▪ Shopping Center Modelo – CC3000 in Trofa

Entity: MJLF, S.A./Modelo SGPS

Specialties: Foundations, Structures, Hydraulic and Roadways

Project: 2005

Built: 2006

Global Value/Our Works Value: - € / - €



▪ Shopping Centre 8ª Avenida at São João da Madeira

Entity: Sonae Sierra

Specialties: Foundations, reinforced concrete and steel Structures

Project: 2005

Built: 2007

Global Value/Our Works Value: - € / - €



▪ Supplier Market for Wholesale of São João da Madeira

Entity: Câmara Municipal de S. João da Madeira

Specialties: Foundations and Structures

Project: 2000

Built:

Global Value/Our Works Value: - € / - €



▪ New plant Company of PINHOL, S.A., in Porto

Entity: PINHOL, S.A. Specialties:

Project:

Built:

Global Value/Our Works Value: - € / - €

BUILDINGS AND CULTURAL INSTALLATIONS



▪ Theatre Campo Alegre "SEIVA TRUPE" in PORTO

Entity: Seiva Trupe - Teatro Vivo

Specialties: Structures

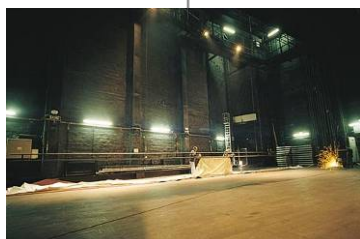
Project: 1993 Built: 1995

Global Value/Our Works Value: 3.000.000 € / 1.000.000€



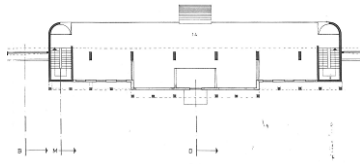
■ House of Mask

Entity: Câmara Municipal de Bragança
Specialties: Structures and Hydraulic
Project: 2004
Built: 2006
Global Value/Our Works Value: - € / - €



■ Reconstruction of the stage box for Coliseu do Porto

Entity: Associação dos Amigos do Coliseu
Specialties: Structures
Project: 1997
Built: 1998
Global Value/Our Works Value: - € / - €



■ Automobile Museum

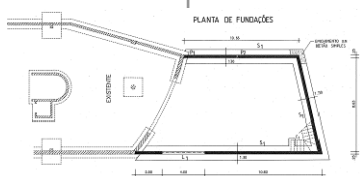
Entity: Câmara Municipal da Maia
Specialties: Structures
Project: 1989
Built: 1990
Global Value/Our Works Value: - € / - €

RELIGIOUS BUILDINGS



■ The New Most Holy Trinity Church, at The Sanctuary of Fátima

Entity: Santuário de Fátima
Specialties: Foundations and Structures
Project: 2000
Built: 2004/2007
Global Value/Our Works Value: 50.000.000€/15.000.000€



■ Expansion of Convent Frades Menores Capuchinhos at Cova de Iria, Fátima

Entity: Santuário de Fátima
Specialties: Structures
Project: 1995
Built: 1995
Global Value/Our Works Value: - € / - €



▪ Parish Centre Church of St.ª Eugenia Rio Covo in Barcelos

Entity: Comissão Fabriqueira da Igreja Sta. Eugénia

Specialties: Structures

Project: 1998

Built: 1998

Global Value/Our Works Value: - € / - €



▪ Bell tower of the Convent de S. Bento da Porta Aberta in Terras de Bouro

Entity: TEGOPI - Indústria Metalomecânica S.A.

Specialties: Steel Construction with 13.5m high

Project: 1996

Built: 1996

Global Value/Our Works Value: - € / - €

HOTELS INSTALLATION BUILDINGS AND SIMILAR



▪ Longevity Hotel Apartamentos, em Monchique

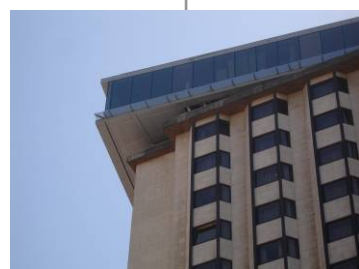
Entity: Longevity Wellness Resort Monchique

Specialties: Structures

Project: 2009

Built: 2009

Global Value/Our Works Value: 35.000.000€ / 1.500.000€



▪ Área Lounge in the coverage (19º floor) at Porto Palace Hotel in Porto

Entity: SONAE SIERRA

Specialties: Steel Structures

Project: 2006

Built: 2007

Global Value/Our Works Value: - € / 1.500.000€



▪ Hotel Tivoli no Porto - Refurbishment and Expansion

Entity: HOTEIS TIVOLI

Specialties: Foundations and Structures

Project: 2002

Built: 2007

Global Value/Our Works Value: 18.600.000€ / - €



▪ Hotel Sheraton at Porto

Entity: Marope - Hotelaria S.A.
Specialties: Steel Structures of all building
Project: 2002
Built: 2002
Global Value/Our Works Value: - € / - €



▪ Pousada of Palmela (Preliminary Study)

Entity: ENATUR– Empresa Nacional de Turismo, S.A.
Specialties: Hydraulic, Structures
Project: 2003
Built: -
Global Value/Our Works Value: - € / - €



▪ Refurbishment, Restoring and Expansion of Lóios Convent, Arraiolos

Entity: ENATUR – Empresa Nacional de Turismo, S.A.
Specialties: Structures, Gás, Hydraulic and Fire safety
Project: 1993/1996
Built: 2007
Global Value/Our Works Value: - € / - €

SPORTS BUILDINGS



▪ HOLMES PLACE at Guadiana building, Rua António Sérgio in Porto

Entity: HOLMES PLACE
Specialties: Structures and Hydraulics
Project: 2003
Built: 2004
Global Value/Our Works Value: - € / - €



▪ Sports Pavilion - C. M. de Foz Côa

Entity: Câmara Municipal de Vila Nova de Foz Côa
Specialties: Structures
Project: 1997
Built: 1998
Global Value/Our Works Value: - € / - €



▪ Sports Pavilion of Futebol Clube Pedras Rubras in Maia

Entity: F.C. Pedras Rubras

Specialties: Structures

Project:

Built:

Global Value/Our Works Value: - € / - €

WATER TREATMENT PLANTS AND EFFLUENT



▪ Collection, Elevatory Station, Reservoir deposit and ETA at Vila Chã, Sordo and Campeã

Entity: Emp. Casais/Águas Trás-os-Montes e Alto Douro

Specialties: Structures

Project: 2004

Built: 2005

Global Value/Our Works Value: 6.500.000 € / - €



▪ Conception/Construction of WSTP de Febros, Gaia

Entity: Construtora Abrantina

Specialties: Earthworks, Foundations, Structures

Project: 1999

Built: 2002

Global Value/Our Works Value: 9.500.000 € / - €



▪ WSTP de Marrakesh - Marrocos (Tender)

Entity:

Specialties:

Project:

Built:

Global Value/Our Works Value: - € / - €



▪ WSTP SOBREIRAS – Project Basic of Structures (Tender)

Entity: SMAS do Porto

Specialties: Structures

Project: 1998

Built: 1999

Global Value/Our Works Value: 33.600.000€ / - €



▪ WSTP de GAIA LITORAL at Madalena, V.N. Gaia (Tender)

Entity: Câmara Municipal de Gaia
Specialties: Project Base of Structures
Project: 1999
Built: 2001
Global Value/Our Works Value: - € / -



▪ WSTP's Resende, Cambres, Sande and Tarouca

Entity: CONDURIL - Engenharia, S.A./Águas de Trás-os-Montes and Alto Douro
Specialties: Architecture and Global Projects
Project: 2004
Built: 2004/2006
Global Value/Our Works Value: - € / - €



▪ WSTP's at Barroselas and Lanheses (Tender)

Entity: Empreiteiros Casais / Águas do Minho e Lima
Specialties: Structures
Project: 2004
Built:
Global Value/Our Works Value: - € / - €



▪ Rabaçal WSTP and Arcossó (Tender)

Entity: Empreiteiros Casais / Águas do Minho e Lima
Specialties: Structures
Project: 2004
Built: -
Global Value/Our Works Value: - € / - €



▪ WSTP de Viana do Castelo - Industrial Area

Entity: Empreiteiros Casais / Águas do Minho e Lima
Specialties: Structures
Project: 2004
Built: 2004
Global Value/Our Works Value: - € / - €



▪ WSTP's at Gelfa, Caminha, Vila Nova de Cerveira and Viana do Castelo (Tender)

Entity: Empreiteiros Casais / Águas do Minho e Lima
Specialties: Structures
Project: 2004
Built:
Global Value/Our Works Value: - € / - €



▪ WSTP and pumping station at Ázere/Cavada and Bagoada/Outeiro

Entity: Empreiteiros Casais - Águas do Minho e Lima

Specialties: Foundations, Structures

Project: 2004

Built: 2005

Global Value/Our Works Value: - € / - €



▪ Lever WSTP - Rehabilitation of Exterior Steel Structure

Entity: AdDP - Águas do Douro e Paiva

Specialties: Steel Structures

Project: 2005

Built: 2005

Global Value/Our Works Value: - € / - €



▪ Vilar and Ranhados WST

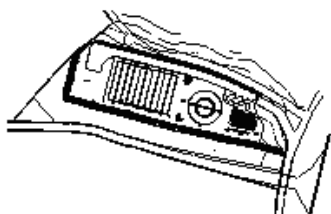
Entity: CONDURIL - Engenharia, S.A. / Águas de Trás-os-Montes e Alto Douro

Specialties: Architecture, Structures, Hydraulic

Project: 200

Built: 2004/2006

Global Value/Our Works Value: - € / - €



▪ WSTP's Vela, Trinta, Pero Soares, Vila Fernando and Porto da Carne

Entity: CONDURIL - Engenharia, S.A. / Águas do Zêzere e Côa

Specialties: Architecture, Structures, Hydraulic

Project: 2004

Built: 2004

Global Value/Our Works Value: - € / - €



▪ Rego do Milho and Santa Justa Dams - Additional Works

Entity: CONDURIL - Engenharia, S.A. / DRATM

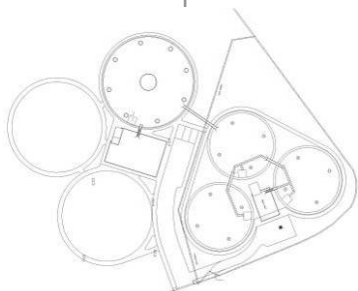
Specialties: Structures

Project: 2004

Built: 2005

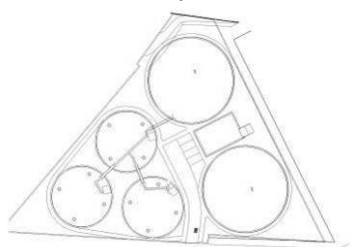
Global Value/Our Works Value: - € / - €

TANKS AND SILOS



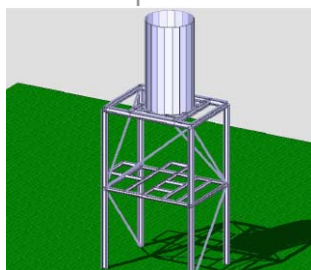
▪ Custóias Water Reservoir with 5000 m3 - Expansion and Rehabilitation

Entity: AdDP - Águas do Douro e Paiva
Specialties: Structures
Project: 2000
Built: 2000
Global Value/Our Works Value: - € / - €



▪ Freixieiro Water Reservoir with 5000 m3 - Expansion and Rehabilitation

Entity: AdDP - Águas do Douro and Paiva
Specialties: Structures
Project: 2000
Built: 2000
Global Value/Our Works Value: - € / - €



▪ Several Steel Silos in Portugal, Belgium and France

Entity: EFACEC Ambiente
Specialties: Structures
Project: 2007
Built: several

GEOTECHNICAL WORKS



▪ Maia Business Park - Central warehouse

Entity: IGI, Investimento Imobiliário, S.A. / MODIS, Distribuição, S.A.
Specialties: Foundations and Structures; Flooring
Project: 2009
Built: 2009
Global Value/Our Works Value: 20.000.000€ / 12.500.000€



▪ "A" Building of Companhia Leiriense de Moagem at Leiria

Entity: Comp. Leiriense Moagem/Capinha Lopes & Assoc.
Specialties: Architecture, Earthworks, Containment and Global Project
Project: 2003
Built:
Global Value/Our Works Value: 4.000.000 € / - €

▪ Excavation and Containment to University Student Resident at Pólo das Ciências da Saúde in Universidade de Coimbra

- **Drainage, Rehabilitation and slope stabilization of access branch to PMO at Guifões to the Metro do Porto**
- **Fleet soil structure on the Nó 2 at VL9**
- **Diaphragm wall with anchorage to make the basement of SGPCM**
- **4 curtains of tipe "berlinense provisórias" and one definitive suported by anchors included on "Cut and Cover", to tunnel of Braga rail station**
- **Terra Armada structure, ground improvement and embankement slope of the acess road to the COIMBRA RETAIL PARK**
- **Containment wall of tipe "Berlinense definitiva" and slope stabilization of enveloping space of COIMBRA RETAIL PARK**
- **Gabions, mattresses and drainage galleries integrated into the storage device to be covered by moving hidrogeológico, shopping in Vila da Feira**

PROJECT COORDINATION



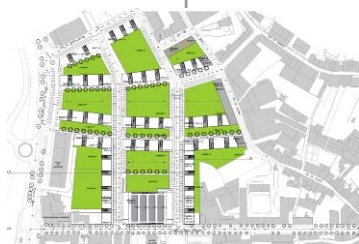
- **Urban Requalification of Bairro of Ferreiros, in the context of Programme of Polis Vila Real**

Entity: Programa da PolisVilaReal
 Specialties: Infrastructures, Hydraulic
 Project: 2002
 Built: 2004
 Global Value/Our Works Value: - € / - €



- **Infrastructure Underground car park in the context of Programme of PolisBragança**

Entity: BRAGANÇAPOLIS
 Specialties: Foundations, Structures and Hydraulic
 Project: 2002
 Built: 2004
 Global Value/Our Works Value: 3.491.585 € / - €



▪ "Cães de Pedra" Allotment, Guimarães

Entity: Herculano Fernandes, Soc. Emp. Imobiliário, SA

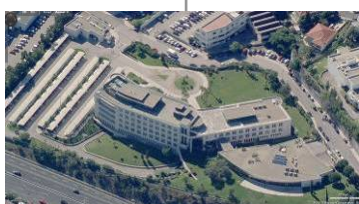
Specialties: Structures, Hydraulic and access roads

Project: 2006

Built: 2006

Global Value/Our Works Value: - € / - €

BUILDING PROJECTS



▪ New Headquarters Building to NESTLÉ, in Linda-a-Velha

Entity: NESTLÉ Portugal

Specialties: Global Project

Project: 1990

Built: 1992

Global Value/Our Works Value: 13.500.000€ / 3.000.000€



▪ New Headquarters Building for ENGIL, in Linda-a-Velha

Entity: Engil, S.A.

Specialties: Structures

Project: 1992

Built: 1994

Global Value/Our Works Value: 10.000.000 € / 3.500.000€



▪ Restaurant "River of Air" at pier on riverside in Gaia

Entity: Cervejaria União Fontes, Lda.

Specialties: Metal structure "honeycomb"

Project: 2006

Built: 2007

Global Value/Our Works Value: 22.000€ / - €



▪ House Rehabilitation, Rua da Bandeirinha, Porto

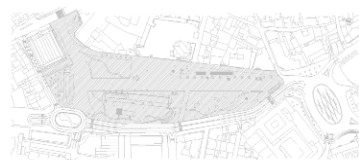
Entity: Dr. Miguel Trigueiros

Specialties: Structures and Hydraulic

Project: 2006 / 2007

Built: 2007

Global Value/Our Works Value: - € / - €



▪ Car Park in Santarém (Tender)

Entity: FDO – Construções S.A. / C. M. de Santarém

Specialties: Structures, Electricity, Hydraulic, Mechanical and Fire Safety

Project: 2007



▪ 4 Car Parking, at V. N. Gaia (tender)

Entity: FDO – Construções S.A. / Câmara Municipal de Gaia

Specialties: Coordination of project design

Project: 2008



▪ Expansion of Headquarters building of SONAE

Entity: Sonae Industria

Specialties: Acoustic, Structures, Hydraulic

Project: 2006

Built: 2006

Global Value/Our Works Value: - € / - €

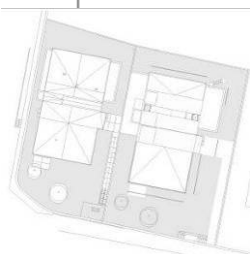


▪ Car Park structure on Lisboa Airport (Tender)

Entity: CONDURIL - Engenharia, S.A.

Specialties: Structures

Project: 2008



▪ Residential building at Rua Pinho Leal in Porto

Entity: Arqº João Pedro Serôdio

Specialties: Structures

Project: 2004

Built: On going

Global Value/Our Works Value: - € / - €



▪ Residential building at Rua Ciriaco Cardoso □ Porto

Entity: Barbosa e Guimarães / Miguel Anacoreta Correia

Specialties: Acoustic, Electricity, Structures, Gas, Hydraulic, Mechanical, Fire Safety, Thermal behavior

Project: 2003

Built: 2004

Global Value/Our Works Value: - € / - €



▪ Residential and Trade Building at Rua Direita de Campinas in Porto

Entity: Sátira Design, Lda.

Specialties: Foundations and Structures

Project: 1998

Built: 2000

Global Value/Our Works Value: - € / - €



▪ “Bica do Sapato” Restaurant-bar, in Lisboa

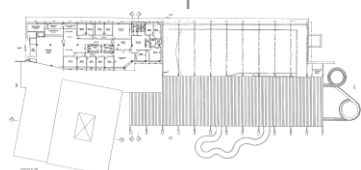
Entity: Bica do Sapato - Turismo e Hotelaria, Lda.

Specialties: Foundations and Structures

Project: 1998

Built: 1999

Global Value/Our Works Value: - € / - €



▪ Building support and coverage of pools in Amarante

Entity: RTA - Região de Turismo de Amarante

Specialties: Concrete and Steel structures

Project: 1998

Built: 1999

Global Value/Our Works Value: - € / - €

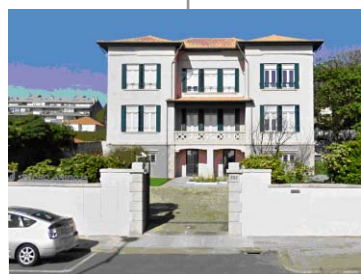


▪ Opinion about the floor carrying capacity of UTIC Warehouse

Entity: UTIC – União de Transportadores para Importação e Comércio

Specialties: Consultancy

Project: 2003



▪ Refurbishment and Expansion of Headquarters Building for Pedro Arroja, Lda., in Porto

Entity: Pedro Arroja, Lda.

Specialties: Hydraulic and Structures

Project: 2002

Built: 2003

Global Value/Our Works Value: - € / - €



▪ Family House in Miramar

Entity: Arqº Filipe Fontes

Specialties: Structures

Project: 2003

Built:

Global Value/Our Works Value: - € / - €



▪ Housing Group Leça II (200 houses)

Entity: CHE - Cooperativa de Habitação Económica, C.R.L.

Specialties: Structures

Project: 1995

Built:

Global Value/Our Works Value: - € / - €



▪ House at Rua António Cândido in Porto

Entity: OPCA, S.A.
Specialties: Foundations and Structures
Project: 2003
Built: 2007
Global Value/Our Works Value: - € / - €



▪ Residential building in urbanization "Varandas do Douro" (cellar + r/c + 7 floors) in Porto

Entity: Mota & Companhia
Specialties: Structures
Project: 1989
Built: 1989
Global Value/Our Works Value: - € / - €

PROJECTS ABROAD



▪ Bridge over Rio Muinguissi at Cabinda - Angola

Entity: ALBASE - Soc. de Engenharia, Lda.
Specialties: Structures
Project: 2007
Built: 2007
Global Value/Our Works Value: 200.000€ / 200.000€



▪ Restaurant "Aroma" in Luanda - Preliminary design

Entity: Engº Fernando Almeida / Aroma Comercial, Lda
Specialties: Structures
Project: 2007
Built:
Global Value/Our Works Value: - € / - €



▪ Metallic covering of the stadium TAFE at Cabinda - Angola

Entity: Municipio de Cabinda
Specialties: Structures
Project: 2010
Built: 2010
Global Value/Our Works Value: - € / - €

PROJECT REVIEW / ADVISORY SUPERVISION



▪ Covilhã Shopping

Entity: SONAE Sierra
Specialties: Audit to the Structure Project
Project: 2004



▪ CASA DA MÚSICA

Entity: Porto 2001
Specialties: Revision of Foundations and Ground Floor
Project: 2000
Built: 2001/2005
Global Value: 100.000.000€



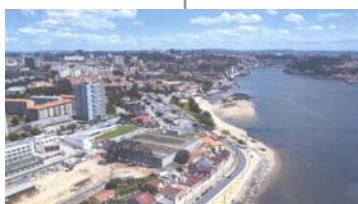
▪ Revision of the Project under the program Guardapolis

Entity: GUARDAPOLIS
Specialties: Structures
Project: 2002
Built: 2004
Global Value: 37.400.000€



▪ Revision of the Project of Viriato Tunnel, Viseu

Entity: VISEUPOLIS
Specialties: Consultancy to the Works Supervision under the Quality Control
Project: 2002
Built: 2003/2004
Global Value: 40.000.000€



▪ Sobreiras WSTP

Entity: SMAS do Porto
Specialties: Containment, Definite periphery, Foundations, Structures and Consultancy to Works Supervision
Project: 1999 Built: 2001/2003
Global Value: 30.000.000€



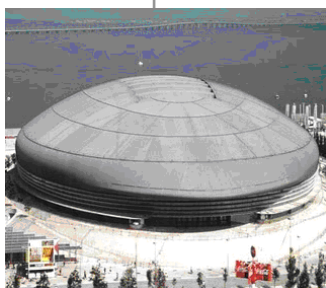
▪ Conception/Construction of Freixo WSTP

Entity: SMAS do Porto
Specialties: Consultancy to Works Supervision
Project: 1997
Built: 1999/2000
Global Value/Our Works Value: 21.400.000€



▪ Platform of Lever STP

Entity: ADdP - Aguas do Douro e Paiva, S.A.
Specialties: Technical Consultancy and design verification
Project: 1997
Built: 1997
Global Value/Our Works Value: 5.000.000€



▪ EXPO 98 - Multipurpose Pavillion - Civil, Structural and Technical works survey

Entity: EXPO 98
Specialties: Coordination and general planning
Project: 1996
Built: 1996/1997
Global Value: 45.000.000€

ADVISORY SUPERVISION



▪ New Bascule Bridge at Leixões Harbor

Entity: APDL - Administ. dos Portos do Douro e Leixões
Specialties: Supervision and Consultancy for Steel Structures and Bascule Power System Project: 2006
Built: 2006/2007
Global Value: 7.000.000€



▪ Exhibition Pavilions at Exponor, Matosinhos - 3th phase

Entity: EXPONOR - Feira Internacional do Porto
Specialties: Works Supervision
Project: 1989
Built: 1989/1990
Global Value: 7.500.000€